

1. Preparation

1.1 Safety

Please use the following tools and pay attention to safety during construction



Safety Clothing



Safety Shoes



Helmet



Safety Glass



Goggles

1.2 Tools



Allen wrench
M8-M12



Wrench
M8-M12



Twist Wrench
M8-M12



Electric Rotor



Awning Turned



Electric Screw Machine



Tape Measure



Rope



Wood Hammer



Outer hexagonal bolt	Type of sleeve :	Inner hexagonal bolt	Type of sleeve :
S7.5	10mm sleeve	M8	10mm hexagon wrench
M10	15(17)mm sleeve		
M12	18(19)mm sleeve		

If there is another type of bolt, please use other sleeves

2. Components List



R095
Rail



SR-0087
Rail Splice



CM-0163
Mid Clamp



HA-1001
Hook



FA-0985
SCREW



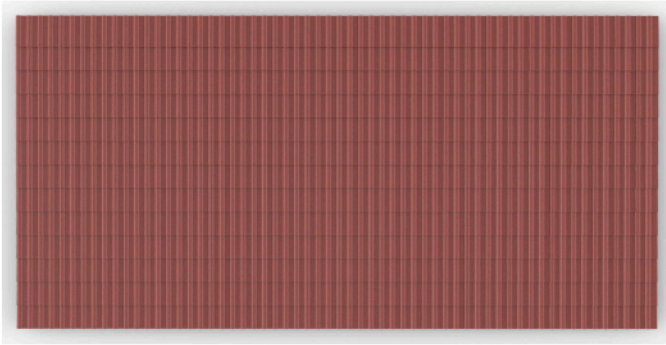
DG-0056-L
Rail Cap



Dg-0056-R
Rail Cap

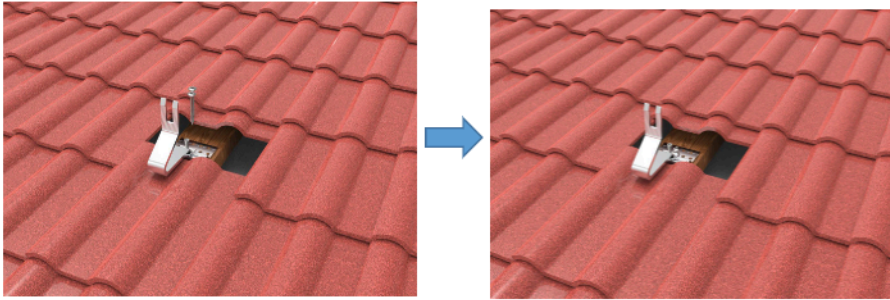
3. Installation Step:

3.1. Measure the distance of wooden beam.

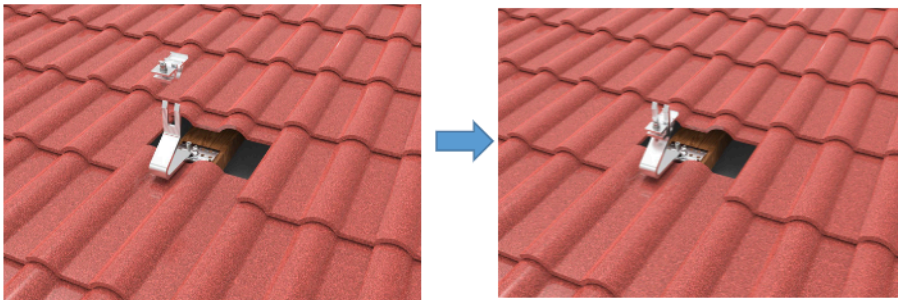


3.2. Hooks installations.

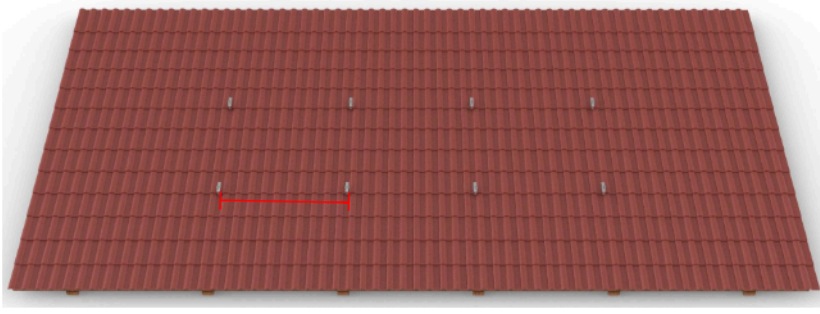
3.2.1 Open the tiles, adjust the hooks at the suitable position, fix the wooden screws on wooden rafter.



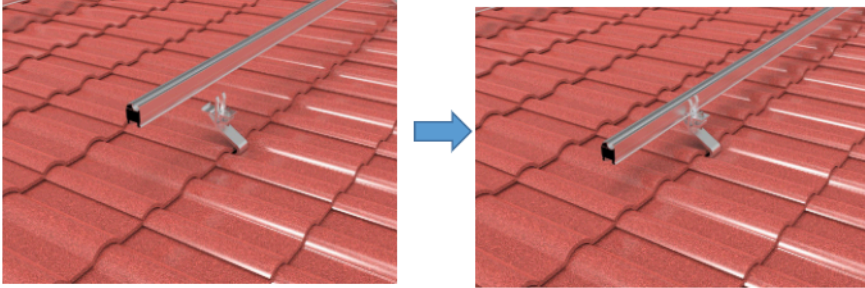
3.2.2 Put rail bottom groove and clamp on the hook.



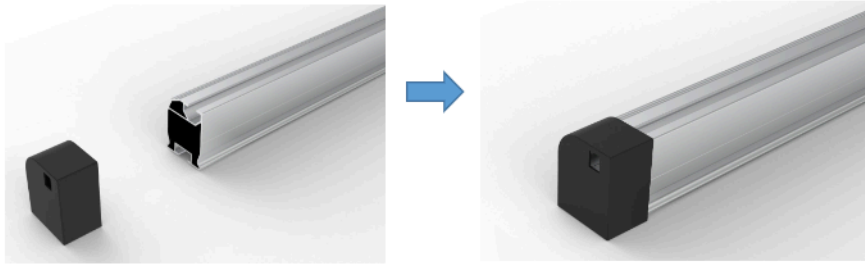
3.2.2 Fix all the wooden screws on the wooden rafter and finish hooks installation.



3.3. Fix the rail to rail groove, adjust the height to suitable position, fasten the clamps on the two sides and fix the rails.

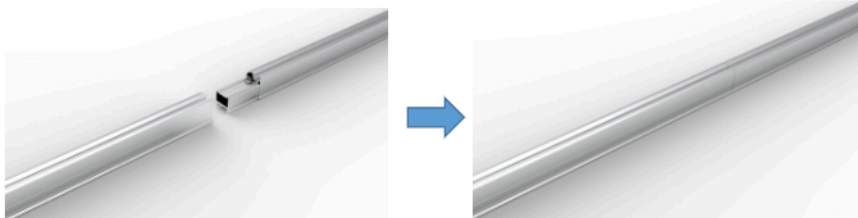


3.4. Install Railing Cap

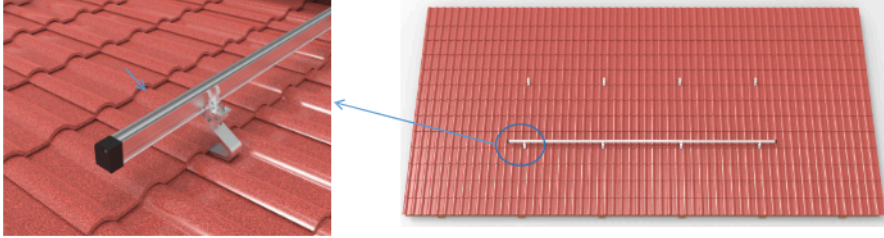


3.5. If the length is not enough, using rail splice to connect.

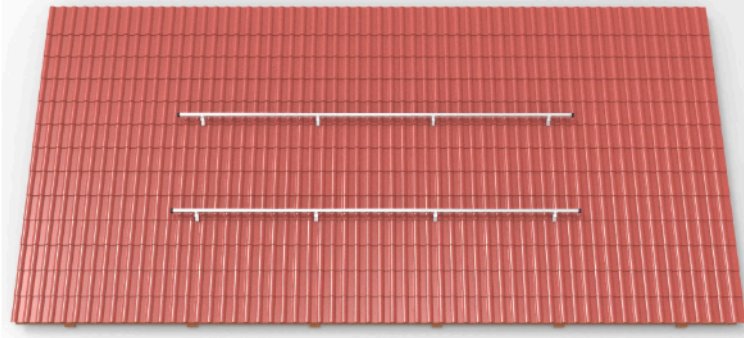
Note : Connect and fix through the block on the connector and the slot of the track



3.6 Finish the installation of the first rails. you can step on the round part of the picture below and install the next rails, then finish all rails installation.



Completed railing installation

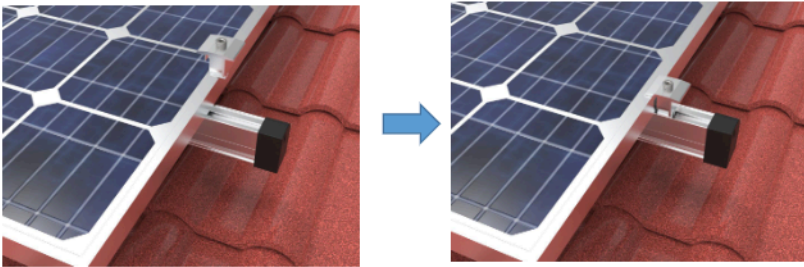


3.6. Panels installation.

3.6.1. End clamps installation.

Step 1 : Directly press the End clamp into the railing.

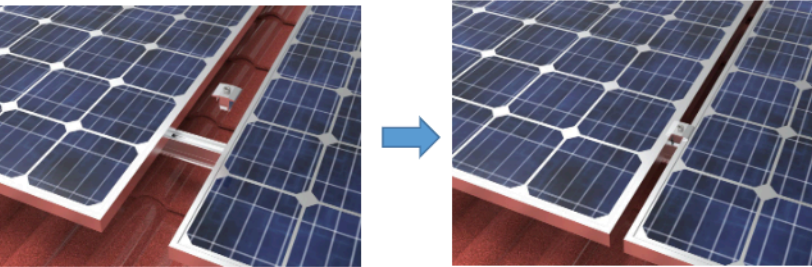
Step 2 : Tighten the bolt of end clamp.



3.6.2 Middle clamps installation.

Step 1 : Directly press the End clamp into the railing, and put the 2nd panel

Step 2 : Tighten the bolt of middle clamp.



3.6.3 Repeat the steps above to complete panels installations.

Completed

