

# 说明书

成品尺寸: 54x104mm

材质: 105克铜版纸

54mm

104mm

offgridtec

## USER MANUAL

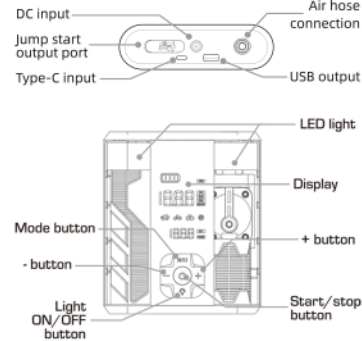


**3-IN-1 MULTITool ND2L**  
Tire Pump & Car Jump Starter & Power Bank  
8800 mAh

**ATTENTION!** Read all instructions carefully

Failure to follow warning instructions can result in fire, personal injury or property damage.

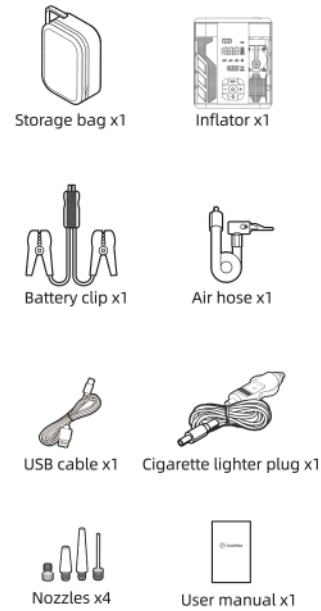
### BRIEF LOOK



### SPECIFICATIONS

Built-in battery capacity: 8800mAh  
USB input/output power: PD20W  
DC input voltage: DC 12V  
Start current: 300A @ 1 sec.  
800A @ 0.5 sec.  
Storage temperature: -20°C ~ + 60°C  
-4°F ~ + 140°F  
Maximum inflatable pressure: 10.35Bar/150PSI  
Pressure precision: ± 0.1 Bar / ± 2 PSI (Inflation)  
± 0.01 Bar / ± 0.2 PSI (Display)

### INCLUDES



### HOW TO OPERATE

#### 1. Turn on/off the inflator

Press **⏻** button for 1 seconds to turn on/off the inflator.

If there is no operation within 5 seconds, the inflator will enter standby mode automatically.

#### 2. Select inflation mode

Press **M/U** button to switch between the five inflation modes below.



Default: 2.5Bar  
Adjustable range: 0.28~6.0Bar



Default: 2.4Bar  
Adjustable range: 1.8~3.0Bar



Default: 2.06Bar  
Adjustable range: 0.28~10.35Bar



Default: 0.6Bar  
Adjustable range: 0.28~1.1Bar

Customized mode:

Default: 8.27Bar  
Adjustable range: 0.28~10.34Bar

#### 3. Preset pressure adjustment

After selecting an inflation mode, press **+** or **-** button to adjust the preset pressure value. Press and hold the **+** or **-** button to quickly adjust the pressure value.

#### 4. Pressure unit

After selecting an inflation mode, press **M/U** button 3 seconds to select a preferred unit of pressure (PSI, Bar, Kpa, kg/cm<sup>2</sup>).

Tip:

1 Bar = 14.5 PSI = 100 kPa = 1.02 kg/cm<sup>2</sup>

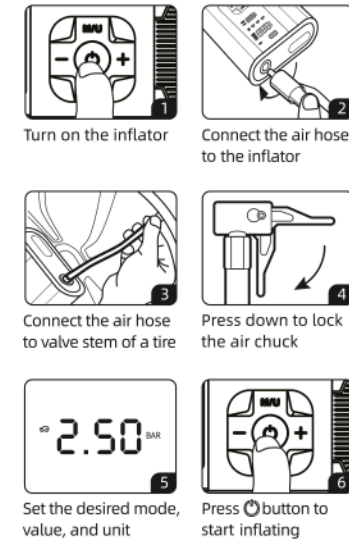
#### 5. Lighting modes

The 1st time press **⏻** button to turn on the light.  
The 2nd time press **⏻** button to enter SOS mode.  
The 3rd time press **⏻** button to turn off the light

#### 6. USB devices charging

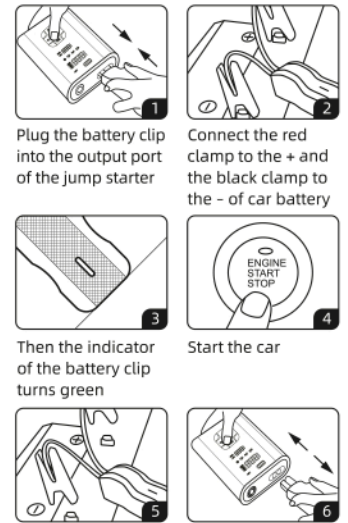
Please use the original USB cable that comes with your device and plug it into the USB-A output port to start charging.

#### 7. Start Inflation



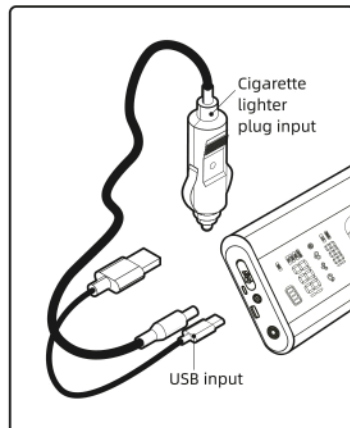
Tip: The inflator will shut off automatically once the preset pressure value is reached. You can also press **⏻** button to stop inflating at any time.

#### 8. Jump Starter



Tip: Before using check the battery icon on the display to ensure the battery has 30% or higher remaining.

### TWO POWER SUPPLY MODES

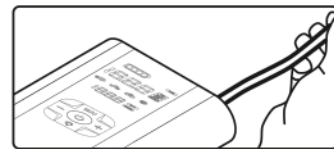


Choose one way to charge the product and the battery symbol flashes when charging.

### OVER-DISCHARGE

The system will automatically enter the over-discharge protection mode when the over-discharge function is triggered in a low temperature environment. The display will not turn on until the charging cable is connected to activate it.

### TEMPERATURE PROTECTION

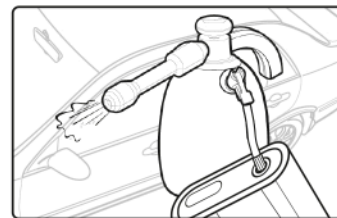


After an extensive period of operation, the inflator enters the temperature protection mode and it will pause working, at which point the screen displays "HI" for 5 seconds and reminds you every minute. The inflator resumes working when the temperature drops to a safe value.

### PRECAUTIONS

Exposure to extreme heat or cold will shorten the inflator's service life. Do not plug in the charging cable for an extended period to avoid overcharging and extend battery life.

### PRESSURE MAINTENANCE MODE



Under power on condition, press **⏻** button 5 seconds to start the pressure-maintenance mode. The unit icon flashes continuously after starting, indicating that it has entered the pressure-maintenance mode.

### TROUBLESHOOTING

phenomenon	Cause/solution
Jump starter indicator shows red light	①Please check whether the "+" and "-" terminals were reversed or not? ②Not start the car last for more than 60s after connected. Please re-plug to re-activate it. ③Not compatible with your car(The compatible range: ≤8.5L gas engines; ≤6L diesel engines) ④continuously use it to start a car over 5 times. Please re-plug to re-activate it.
Does not inflate	①The air pump enter over-current protection mode.it will be reactivated after charge; ②The air pump has insufficient power, please recharge then use it; ③The air pump enter activated temperature protection. please cool down 15-20 minutes then use it again; ④The inflation tube is not sealed with the tire trachea, please check whether it have air leak; ⑤Used on truck tires, inflation is higher than 87PSI, not suitable for this product;
Inaccurate airpressure display	①Check whether the connection between the inflation pipe joint and the tire air nozzle is too tight(some vehicles cannot be connected too tightly), you can gradually loosen the interface for testing; ②The air pump work continuously, the internal air will expand due to increase temperature,air pressure measurement will have a slight error it will be normal after cool down; ③If you want to display more

The inflatabletube is too hot to be unplugged	①It is normal for inflation tube to get hot after working for a long time. Please try to rotate the black nylon part of the inflation tube instead of the orange silicone part to remove it;
Power consumption is too fast	① Due to our battery algorithm, the first 50% of the power consumption will be fast, but the subsequent 50% of the power consumption will be slower; it will not affect the number of inflate times;
Cannot be charged	① Check whether the output of charger is ≥ PD20W, if not, please replace it; ② Check if there is a battery icon flashing when charging, if not, please change a data cable to charge; ③ If it still fails to charge, please contact our customer service team;
Can not inflate balls normally	① Please check whether the connection between the ball needle and the inflation tube is correct. ENSURE THE END OF THE BALL NEEDLE BE FLAT WITH THE INFLATION PORT, NOT STICK IT IN.

### NOTICE

- Not for Children:** This product is not a toy and should not be used by children. During inflation, keep children at a safe distance from the pump.
- Regular Charging Recommended:** If the product is used infrequently, it is recommended to charge it at least once a month.
- Select the Correct Measurement Unit:** Ensure you select the correct measurement unit to avoid over-inflation. It is recommended to use Kpa or common units like Bar. Conversions: 1 PSI = 6.89 Kpa, 1 PSI = 0.068 Bar, 1 PSI = 0.07 kg/cm<sup>2</sup>.
- Dry and Clean Environment:** Use the product in a dry and clean environment. It is not waterproof and should not be rinsed with water.
- Safety During Abnormal Operation:** If abnormal noise occurs or the temperature becomes too high during operation, turn off the device immediately.
- Caution During High-Pressure Heating:** Inflation will cause physical heating due to high-pressure operation. Be careful when removing the air hose. Avoid touching the orange silicone part as it will be hot. Instead, touch the black nylon part of the hose (heat-resistant).

offgridtec

Offgridtec GmbH  
Im Gewerbepark 11  
84307 Eggenfelden  
Germany

+49 8721 91994-00  
info@offgridtec.com  
www.offgridtec.com

WEEE-Reg.-No. DE37551136