

HW400B 红外彩色印刷

尺寸: 55x55mm 4折页

材质: 80g 双铜

WiFi PIR motion sensor



*Please read this manual carefully before use and keep it for future reference

Parameters:

USB input voltage: DC5V/ 2A
 Battery : DC3V LR03*2
 Standby current : ≤55uA
 Alarming current : ≤135mA
 Low-voltage notification : ≤2.4V
 WiFi: 802.11b/g/n
 Detection distance : 6M
 Detection angle : 360°ceiling –installation
 Installation method : ceiling /wall
 Working temperature : -10 ~ +50°C
 Working humidity : ≤95%RH

1

1. Download “Tuyasmart” by iOS or Google play store, or scan below QR code to download.

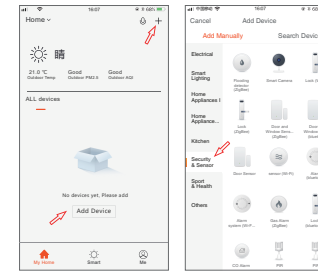


iOS/Android

2. Registering a Tuya account and log-in it.

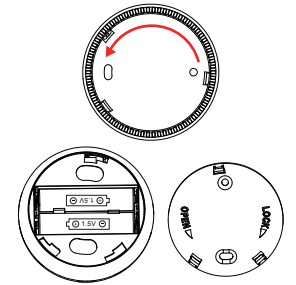
2

3. Click “+” on the top of right corner at home page, choose “Security&Sensors” then find “Sensor(Wi-Fi)” to add device.



3

4. Counter clock wise to open back cover and insert batteries.

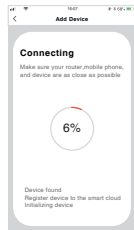


4

5. There are two methods to connect network.

5.1 EZ Mode (Default mode).

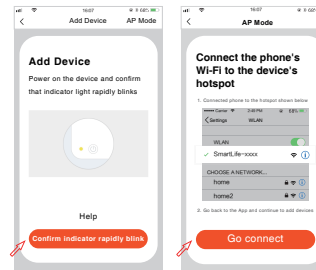
Press the “RESET” for more than 5 seconds by a pin. when indicator flashes quickly, then choice Wifi(2.4GHz) and input password to connect network by APP.



5

5.2 AP Mode

Press the “RESET” for more than 5 seconds by a pin. when indicator flashes quickly, press 5 seconds again, when indicator flashes slowly, then choice Wifi(2.4GHz) and input password, and choice “AP Mode” on the top of right corner, click “Next” into wifi list page to choose “Smartlife_XXXX” to connect network.



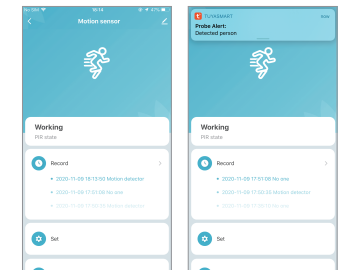
7

6. After connected network, please testing it and mind following points.

※ Please go away from device for more 30 seconds, after that, move body near device to test, indicator light on, and received message by App means testing successful.

※ If someone always movement in detection area of PIR sensor, it will detect one times only.

8



9