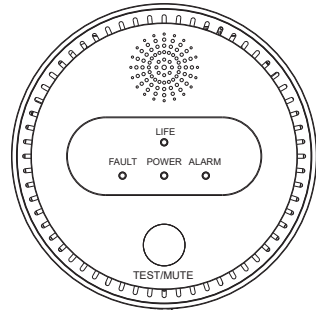


Smart WiFi Combustible Gas Detector User Manual



offgridtec

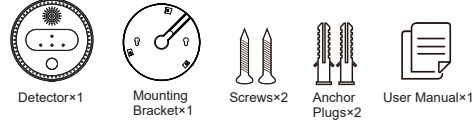
*Please read the manual carefully before usage and keep it for future reference.

I. Product Overview

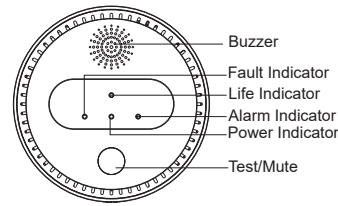
This device is a WiFi enabled, flammable gas alarm, which is used to detect any leakage of flammable gas and provide advance warning. When a flammable gas leak is detected and the concentration value set by the device reached 8% LEL, the alarm will send an alarm signal. A loud audible alarm on the device will sound and a notification will be sent to a phone which can be viewed in the Smart Life APP.

This product is for indoor use where a gas leakage may occur, such as kitchens, garages, industrial shop RV camper, or another location that stores or uses a combustible gas.

Package Contents



II. Appearance Instruction



III. Technical Specifications

Operating Voltage	AC110V~AC250V
Operating Power Consumption	<2W
Alarm Power Consumption	<2W
Sensor Type	Semiconductor Sensor
Applicable Gases	Methane (CH4), Propane (C3H8)
Sampling Mode	Free Diffusion
Alarm Setting Value	8% LEL
Sensor Lifespan	8 years
LED Indicators	Power indicator: green LED; Alarm indicator: red LED; Fault indicator: yellow LED; Life indicator: yellow LED
Alarm status indication	The red LED indicator flashes continuously and the buzzer give a "beep" sound.
Alarm Volume	>70db (1m directly in front)
WiFi Standards	802.11b/g/n (2.4GHz band)
Operating Temperature	-10 °C ~55 °C ; Humidity: ≤95%RH (Non-condensing)
Installation	Wall-mounted
Product Dimensions	Φ110*34mm

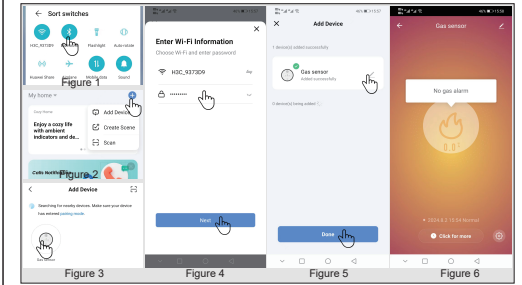
IV. Description of Indicator Status

State	Color	Indicator	Alarm Sound
Power Supply	Green	Normally on	Null
Preheating	Red, Yellow	Slow Flash	
Alarm	Red	Flashing	Continuous "Beep" Alarm
Sensor Fault	Yellow	Flashing	Null
Sensor Service Life Expired	Yellow	Flashing	Null
WiFi Network Settings Mode	Red, Yellow	Flashing	"Beep" Once
WiFi Network Configuration Successfully	Red, Yellow	Flashing Twice	"Beep" Twice
WiFi Network Configuration Failed	Red, Yellow	Flashing Three Times	"Beep" Three Times

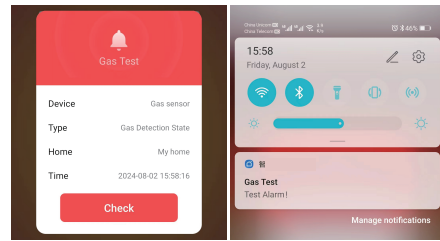
V. How to Use

- Download the Smart Life APP from Google Play Store (Android) or Apple Store (iOS), or simply scan the provided QR code to download the Smart Life APP.
- Plug the gas detector into the power socket, and the detector automatically enters the warm-up mode, which takes 120 seconds; during the expected period of the detector, long press and hold the "Test/Mute" button for 5s, and release the button when the buzzer of the device makes a "beep" sound, and the device enters the network pairing mode, in which the red LED and yellow LED flash quickly.
- The simplest mode is pairing via Bluetooth. By enabling Bluetooth on your phone, a Bluetooth auto-pairing mode is available to use. The device can be found and shown in the App after following the setup steps below, and can be added using the Add button.

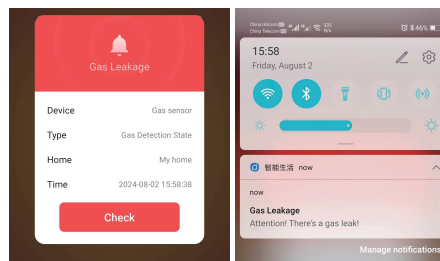
- Switch on Bluetooth on the phone (Figure 1);
- Click "+" to add device on the Smart Life APP (Figure 2);
- The APP searches and finds the device, then click "Gas Detector" (Figure 3);
- Input the Wi-Fi password and click "Next" (Figure 4);
- Click "Finish" when the device is added successfully (Figure 5).



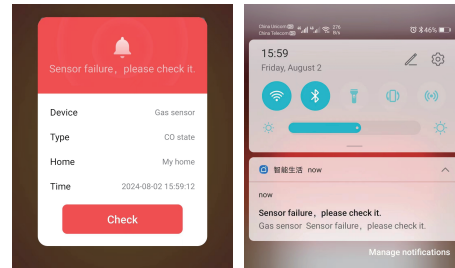
- Detector test. This device is designed with a test button that can be used to test the alarm. When testing the detector, the red and yellow LEDs of the detector will flash and an alarm can be heard, and the mobile APP will receive a test alert message.



- Detector alarm. When the detector detects that the gas concentration is higher than the alarm set value, the red LED flashes continuously and quickly and the buzzer gives out a "beep" alarm sound, and the mobile phone APP will receive a gas alert message.

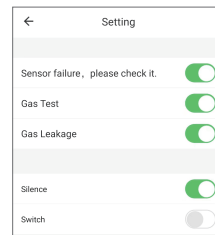


- Fault alarm. When the detector detects a sensor fault, the yellow fault indicator flashes continuously, and the mobile APP will receive a sensor fault alert message.



- Silence mode. When the detector gives an alarm signal, the detector will enter the mute mode by manually pressing the "Test/Mute" button or turning on the "Mute" button in APP setting, and the mute time is 1min.

⚠ Warning: The mute button is only designed for your convenience and does not alleviate any real-life risks. In the event of any alarm, it is highly advisable to check your home for potential problems. DO NOT IGNORE ANY ALARM, failure to respond may result in serious injury or death.

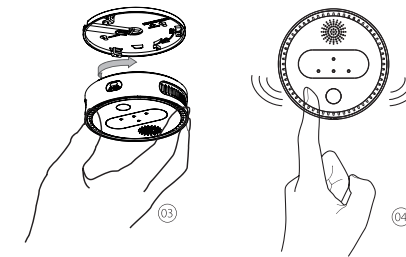
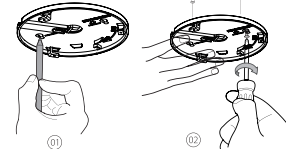


VI. How to Install

- Installation Diagram
Before installation, please confirm the gas density to be monitored. If the gas is heavier than air, e.g. propane gas, the gas detector should be installed at a height of 0.3 to 1 m above the ground and 1.5 m away from the gas source. If the gas is lighter than air, e.g. natural gas, man-made gas, methane and biogas, the detector should be installed, if possible, within 1.5 m above the gas source. If possible, install the detector above the gas source, within 1.5 m of the gas source. If the detector is installed next to the gas source, it can still work, but requires more gas to be released in order to be detected.

2. Installation Method

- Use the mounting bracket to mark the screw holes on the ceiling or the wall.
- Drill holes at the 2 marks using an appropriately-sized drill bit. Insert the anchor plugs and screw the mounting bracket using the screws provided.
- Attach the alarm to the mounting bracket and turn clockwise to lock the alarm.
- Plug the gas detector into the power plug. After the detector has warmed up, press the "Test/Mute" button to test the detector.



VII. Precautions

- Slight heating on the surface of the case during operation is normal.
- It is recommended to remove the alarm when cleaning.
- Avoid spraying aerosols on the gas alarm.
- Do not allow the cleaning agents to enter the body, and please retest the device after cleaning.
- The service life of the semiconductor sensor used in the alarm is 5 years. Please replace it in time when it exceeds the service life.
- It is strictly prohibited to use a lighter to test the gas passway hole of the alarm to avoid damaging the internal sensors of the alarm.
- For your safety, in addition to the proper use of this device, you should take precautions in your daily life to ensure safety and prevention.

VIII. Faults and Troubleshooting

Faults	Causes	Troubleshooting
Red LED flashing, buzzer sounding, alarm occurring without gas leak	No power for a long time	1. Disconnect the power supply first, then connect the power again, repeat 2 to 3 times. 2. Turn on the detector and leave it for 24 hours
Yellow fault light flashing	Detector Fault	Contact supplier for repair
Yellow life light flashing	Detector life expired	Replace the detector
WiFi configuration failure	Too far from router or incorrect operation	Test the device by placing it within 10 m of the router and follow the instructions in the manual and the prompts in the APP

Offgridtec AG
Im Gewerbepark 11
84307 Eggenfelden
Germany

Date: 2024. 8. 8			
产品型号	PA-216W	部件名称	英文说明书
设计		材料	80克书写纸(正反印)
印刷尺寸	350*100mm	成品尺寸	70*100mm
工艺			
注:			