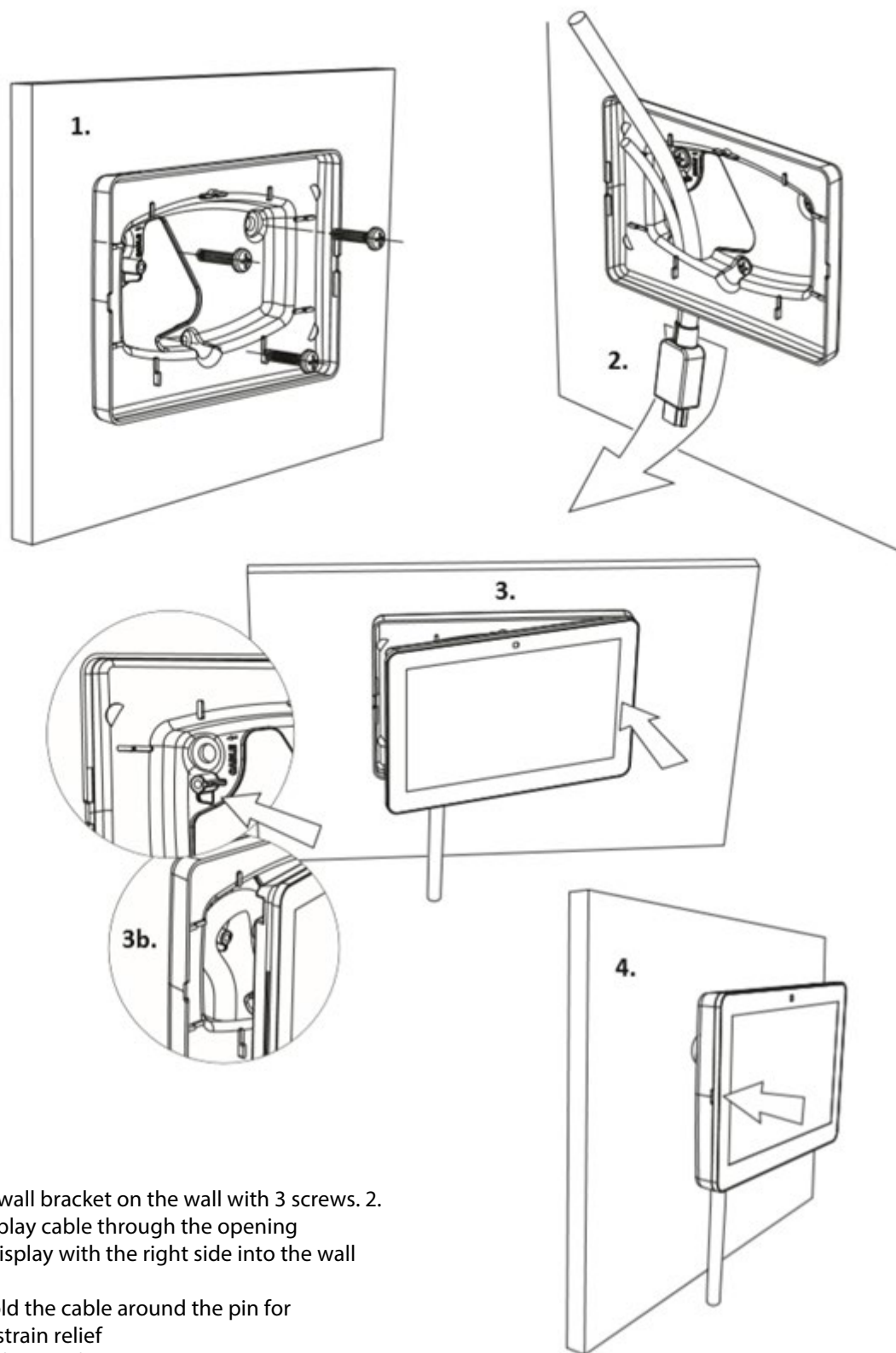


GX Touch 70 Wall mount

www.victronenergy.com

Mounting instructions for GX Touch 70 wall mount (BPP900465050)



1. mount the wall bracket on the wall with 3 screws.
2. pull the display cable through the opening
3. insert the display with the right side into the wall bracket.
Optional: fold the cable around the pin for additional strain relief
4. press the left side of the display into the holder.